

# SECONDARY EDUCATION GED PREPARATION PROGRAMS

A NON-TRADITIONAL  
PATHWAY TO SUCCESS!!



*Opportunity  
Is Knocking*



# Student Characteristics

- There is no “typical” student – every student has a story
- Traditional school has not been successful
- Students are “at-risk” of dropping out
- Issues facing students include:

Overage for grade

Family responsibilities/teen parenthood

Chronic health issues

Alternative thinker (creative; out-of-box)

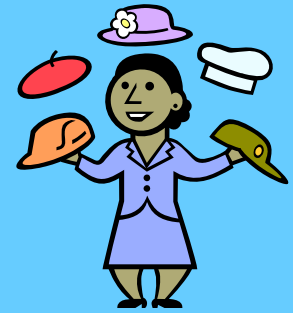
Inability to adapt to structure of school

Habitual truancy

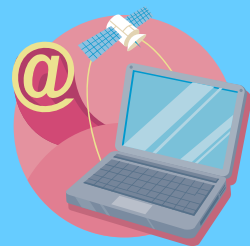




# Program Specifics



- Referrals come from all middle and high schools
- Classes are offered at Community High (day and evening) and at the Tech Center with flexible, abbreviated student schedules
- Students receive academic preparation, career counseling, workplace readiness' skills, citizenship development, financial literacy and technology training
- Students have individual learning plans



# Program Highlights

- Concurrent Enrollment at Community College
- Graduation Ceremony with Community HS
- Scholarship Opportunities
- Referrals accepted year-round
- Timely, ongoing assessments and placements
- Community and school system partnerships established to provide career development



- Junior Achievement
- Field trips to area colleges
- Chesterfield Mental Health, Court Services
- Chesterfield Public Education Foundation
- Guest speakers from colleges and the workplace
- Regional service provider memberships
- Facilities Department, Spring Forward, Tech Center, Adult Ed and CCHS



# 2007/2008 Student Data

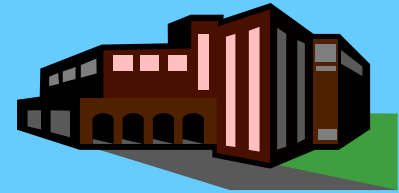
- 191 Students Enrolled
  - 50 Special Education Students
  - 50 OSC referred students
  - 65% Caucasian; 28% African American; 6% Hispanic
  - 60% male; 40% female
  - 11 students moved from pre-GED to GED
  - Average age of students at entry is 16
  - 70 Graduates
  - 4 students concurrently enrolled at John Tyler
  - 68% retention of all students enrolled





# GED Graduates

- 96% pass the GED the first time
- Of 70 graduates last year,
  - 23 planned to attend community college
  - 11 planned to attend trade/business school
  - 5 enlisted in the military
  - 31 were planning to work





# The Future



- Referrals have increased dramatically over past three years
- Goal is to continue timely assessment and placement before we “lose” a student
- Increase the percentage of students pursuing post-GED training or education

