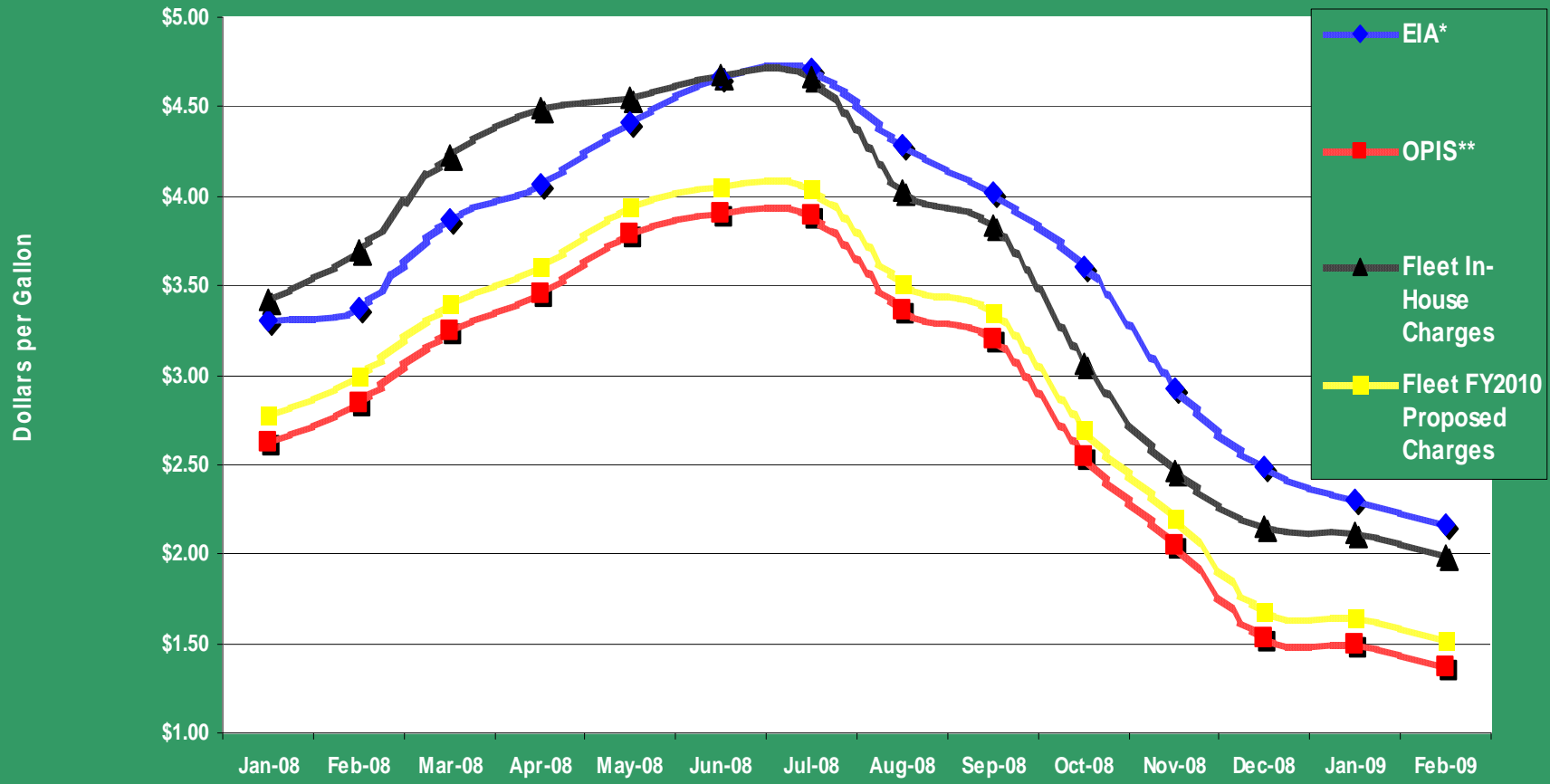


Comparison of Diesel Prices For the Period Jan 2008 Thru Feb 2009



	Jan-08	Feb-08	Mar-08	Apr-08	May-08	Jun-08	Jul-08	Aug-08	Sep-08	Oct-08	Nov-08	Dec-08	Jan-09	Feb-09
EA*	\$3.30	\$3.38	\$3.87	\$4.07	\$4.41	\$4.67	\$4.71	\$4.29	\$4.02	\$3.60	\$2.92	\$2.49	\$2.30	\$2.17
OPIS**	\$2.63	\$2.84	\$3.25	\$3.46	\$3.79	\$3.90	\$3.89	\$3.36	\$3.20	\$2.55	\$2.05	\$1.53	\$1.50	\$1.37
Fleet In-House Charges	\$3.42	\$3.69	\$4.23	\$4.50	\$4.55	\$4.68	\$4.67	\$4.03	\$3.84	\$3.06	\$2.46	\$2.15	\$2.12	\$1.99
Fleet FY2010 Proposed Charges	\$2.78	\$2.99	\$3.40	\$3.61	\$3.94	\$4.05	\$4.04	\$3.51	\$3.35	\$2.70	\$2.20	\$1.68	\$1.65	\$1.52

3/26/2009

*Energy Information Administration (EIA) - (www.eia.doe.gov) for Lower Atlantic PADD 1C

**Oil Price Information Service (OPIS) - In-house report provided by vendor.